

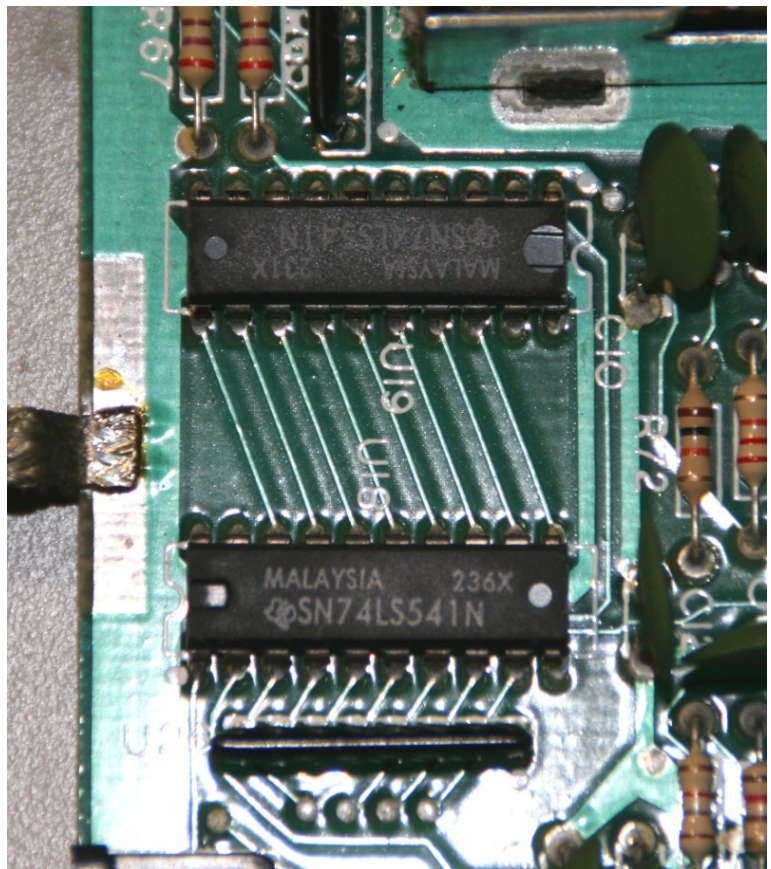
Controller Chip Replacement for ColecoVision

Perform this repair if one or more of your controllers has a “stuck” button/direction, even if a good controller is plugged in, or no controller at all is plugged in. If a number is stuck, then the game may start without giving the options for difficulty level or number of players.

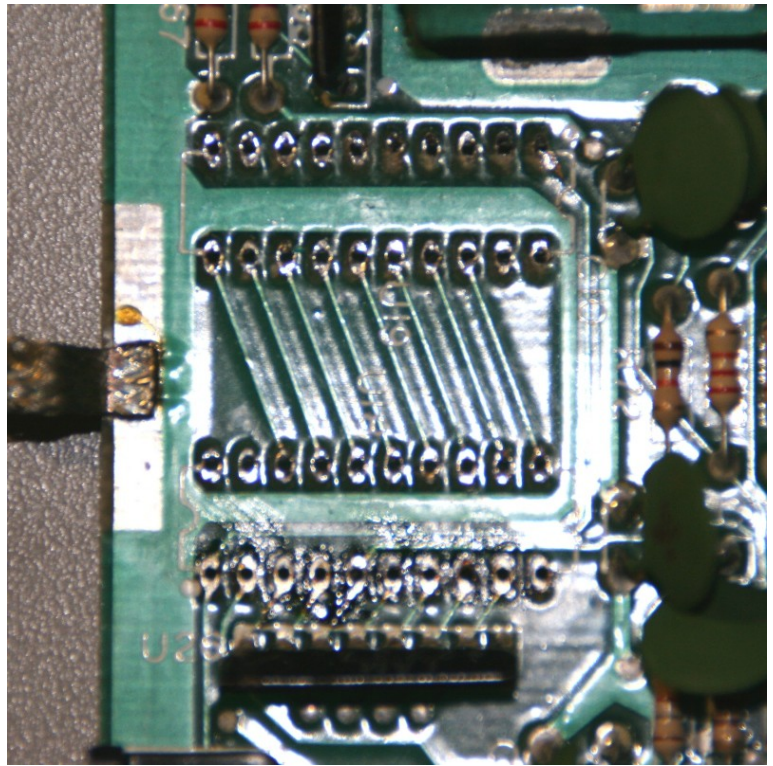
To perform this repair, you'll need two new 74LS541 chips, and two 20-pin IC sockets (0.3” spacing).

You will also need to know how to desolder. There's at least a couple of methods. Usually what I do is clip all of the leads as close as possible to the plastic part of the chip. Then I pull out each of the pins, using a soldering iron and pair of cutters to remove. After that, I use a solder-sucker to clean up each of the holes. If you're not comfortable with desoldering, you're better off finding someone to help you.

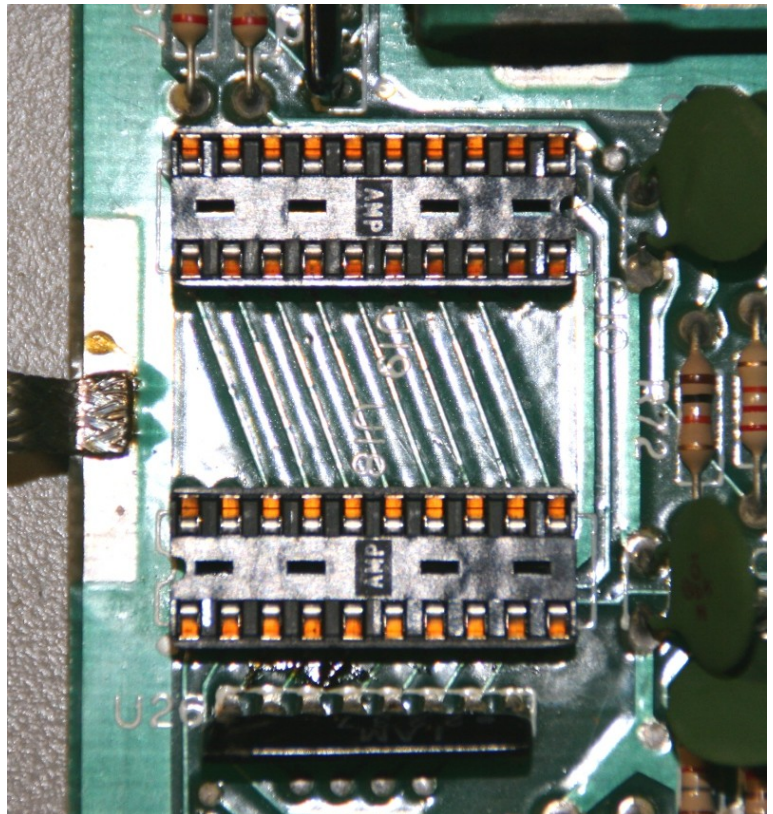
Locate the two 74LS541 chips.



Desolder both chips, and clean up the holes. You could just do the one that has failed, but it's likely simpler just to do both. Make sure all of the traces and pads are in good shape. If they're not, make note of them, so you know which pins require testing and/or repair.



Solder in the two sockets.



Install 2 new 74LS541 chips. Note the orientation of each chip. As shown in the picture, pin 1 of the top chip is on the upper right, and pin 1 of the bottom chip is on the lower left.

